



6268 LUBRICATION GUN OPERATING MANUAL

Contents:

- **Assembling the 6268 Lubrication Gun**
- **Loading the 6268 Hydraulic Lubrication Gun**
- **Injecting Material Into Your Valve**

**No. 6268
Lubrication Gun**

Upon receipt thoroughly inspect your 6268 lubrication gun for any damages that may have occurred during shipping. If any damage has occurred, immediately contact the carrier in order to initiate a claim.

The 6268 comes in 2 assemblies. The 6268A-13 has a complete hose assembly. The 6268A-13-G is complete with hose assembly and gauge.

The following assembly is required:

1. If you have the 6268A-13-G you will need to tighten the gauge (15MGF) in the 1/4" tee (.25 Tee) on the hose assembly.
2. Attach and tighten the hose assembly to the head (327603).

Your 6268 Lubrication Gun is now ready to load.

Loading the 6268 Lubrication Gun

1. Turn the Valve Screw (327605) counter clockwise to release pressure in the hose.
2. Turn the Handle (316825) counter clockwise to release pressure in the gun. Unscrew the head assembly (327603) from the cylinder (328212).
3. Continue to unscrew the Handle (316825) until there is sufficient room to load the required amount of material.
4. Loading material.
 - A. Valve Flush: Pour in the required amount.

-or-

- B. "K" size stick: Unwrap the stick and insert it. Rewrap any unused portion.
5. Replace the head assembly (327603) onto the cylinder (328212) and tighten.
6. Tighten the Valve Screw (327605).
7. Turn the handle (316825) clockwise as tight as you can to prime the gun.

Your 6268 is now ready to inject material into the valve.

Injecting Material Into Your Valve

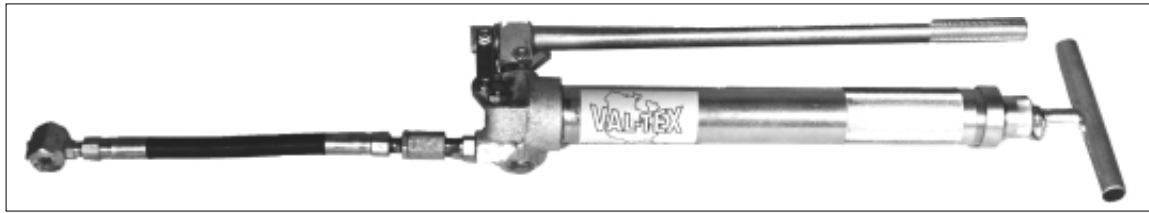
1. The 6268 is equipped with a giant buttonhead coupler to inject into a giant buttonhead fitting.
2. It takes approximately 20 strokes to prime the gun.
3. After 10-14 strokes retighten the handle (316825) to keep material forced to the piston.
4. If your gun is so equipped, monitor the gauge (15MGF) during pumping to avoid excessive pressure.
5. It takes approximately 240 strokes to inject 10 ounces of material. Each stroke produces approximately 1/24 of an ounce.

Val-Tex 6268A-13



"Quality That Pays For Itself"

15,000 P.S.I. High Pressure Valve Lubrication Gun

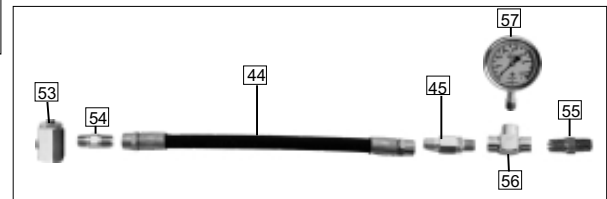
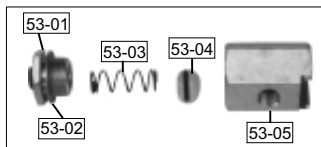
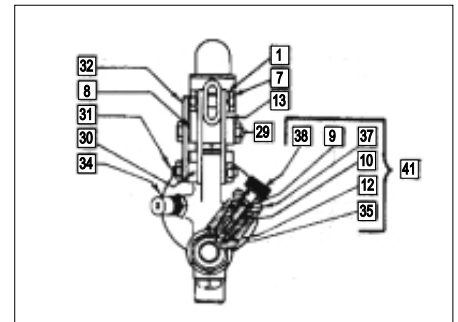
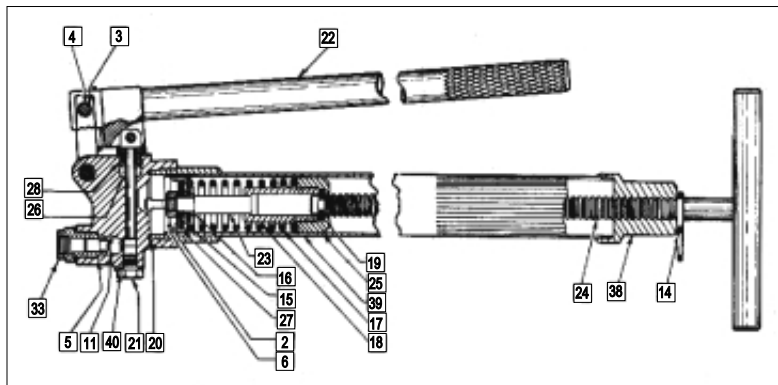


Stick Size: K
PSI Rating: 15,000
Priming: Manual
Delivery: 1 oz. / 24 strokes

Weight: 17 Lbs.
Gauge: Optional
Lube Pack Compatible: No
Internal Relief Valve: No

The Val-Tex 6268A-13 lever gun injects Valve Flush and all types of lube sealant, from heavy to light viscosities with equal ease. Extra heavy duty barrel assures maximum safety and long life. The 6268A-13 accepts all standard lube sealant sticks. Standard features include extra long handle for maximum leverage, mechanical screw and spring primer to assure positive prime and a pressure relief screw for ease in disconnecting.

The standard 6268A-13 shipped as shown above, comes complete with ball bearing swivel, hose center, and a giant buttonhead coupler with nylon coupler washer. Options such as high pressure hose tee, gauge, gauge guard, carrying strap, Z-swivel, 1/4 turn shutoff / bleeder valve, various hose lengths, and repair parts are available upon request.



6268A-13-G: Gun complete with hose assembly and gauge

Item No.	Part No.	Description
1	12369	Lockwasher, 1/4" O.D.
2	17615	Lockwasher, External Tooth
3	52312	Bushing, 1/2" long
4	52313	Link Pin, 1-13/64" long
*5	54845	Washer, Copper 11/16" O.D.
6	77783	Nut, Hex 3/8-16
7	77795	Nut, Hex Jam 1/4"-20
8	79236	Washer, Steel, 17/32" O.D.
*9	171000-5	"O" Ring, 3/8" O.D.
*10	171009-1	"O" Ring, 9/16" O.D.
*11	171700-28	Ball, Check Valve, 7/16" Dia.
*12	313899	Gasket, 5/16" O.D.
13	316802	Link
14	316803	"S" Hook
15	316804	Washer, 1-1/4" O.D.
*16	316805	Bushing and Washer Assembly
17	316807	Spring, 3-3/8" Long
18	316808	Sleeve
19	316809	Split Ring, 15/16" O.D. (Approx.)
*20	316812	Gasket, 2" O.D. (Approx.)
21	316813	Plug, 7/16-20

Item No.	Part No.	Description
22	316815	Lever Assembly
23	316819	Screw, Shoulder
24	316825	Handle & Screw Assembly
25	316827	Nut, Retaining 1-19/32" O.D.
*26	316828	Packing
*27	316829	Cup, Hydraulic, 1-5/8" O.D.
28	316834	Screw, Packing
29	317396	Pin, Piston
*30	317397	Spacer
31	317398	Pin, Link
32	317399	Piston Stop
33	319352	Adapter
34	322610	Loader Valve Assembly
35	G-327603	Piston & Cylinder Head Assembly
*36	327605	Screw, Valve
37	327606	Body, Valve
38	328211	Cylinder Cap
39	328212	Cylinder
40	380794	Gasket 5/8" O.D. (Approx.)
41	394113	Piston, Head and Valve Assembly
44	20	Hose Center

Item No.	Part No.	Description
45	16	H.P. Ball Bearing Swivel
49	5N	Nylon Coupler Washer
52	13	Complete Hose Assembly
53	6	Giant Buttonhead Coupler
53-01	6-C	Cap
53-02	6-G	Gasket
53-03	6-S	Spring
53-04	5-N	Nylon Washer
53-05	6-B	Body
54	43379	#6 G.B. Coupler Adapter
OPTIONS		
55	301296	High Pressure Tee Adapter
56	.25 TEE	High Pressure Hose Tee
57	15MGF	High Pressure Gauge
	GC-250	Gauge Guard
	1422	Carrying Strap
	319700	Shut-off / Bleeder Valve
	394117	Repair Kit
	52752	Z-Swivel
		Various Hose Lengths

* Included in 394117